

LPC-L2294 is compact development board with LPC2294 ARM7DTMI microcontroller from Philips Semiconductors Inc. with 512KB internal flash, 64KB internal RAM, There are two options: 1MB external RAM + 2MB external Flash and 8MB external RAM + 4 MB external Flash.

Board have CAN, RS232, 10 Mbit Ethernet, SD/MMC card connector, external memory bus is available on connector.

eCos port is available for this board and uLinux port is preparing.

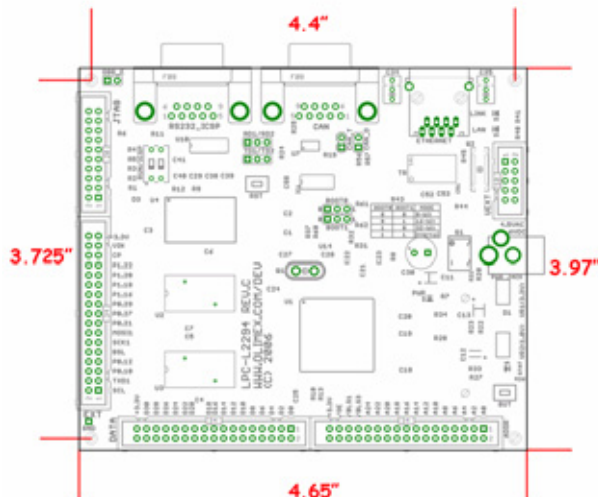
The board features are:

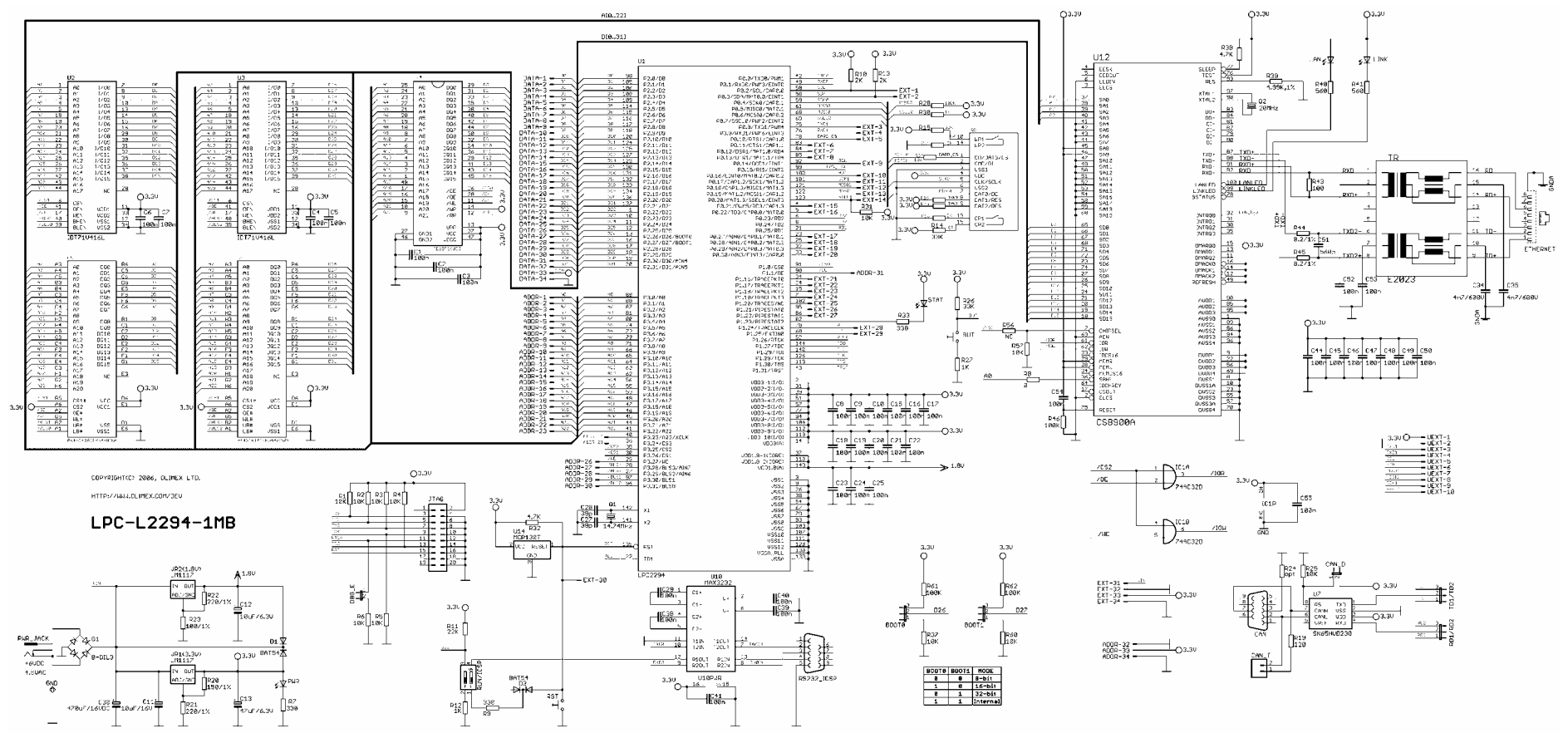
- **LPC2294** ARM7DTMI microcontroller 256KB internal Flash, 16KB internal RAM
- 10 MBit Ethernet with CS8900A in 16 bit mode and interrupts
- CAN 2.0 driver and interface
- RS232 driver and interface
- SD/MMC connector (on bottom side)
- External memory bus connector
- UEXT Olimex's standard connector with I2C, RS232, SPI and power supply
- JTAG connector
- PCB: FR-4, 1.5 mm (0,062"), red soldermask, white silkscreen component print
- Dimensions: 118x101 mm (4.65 x 3.97")

1MB RAM version is capable to run eCos with many application including TCP-IP

8MB RAM version is capable to run uLinux

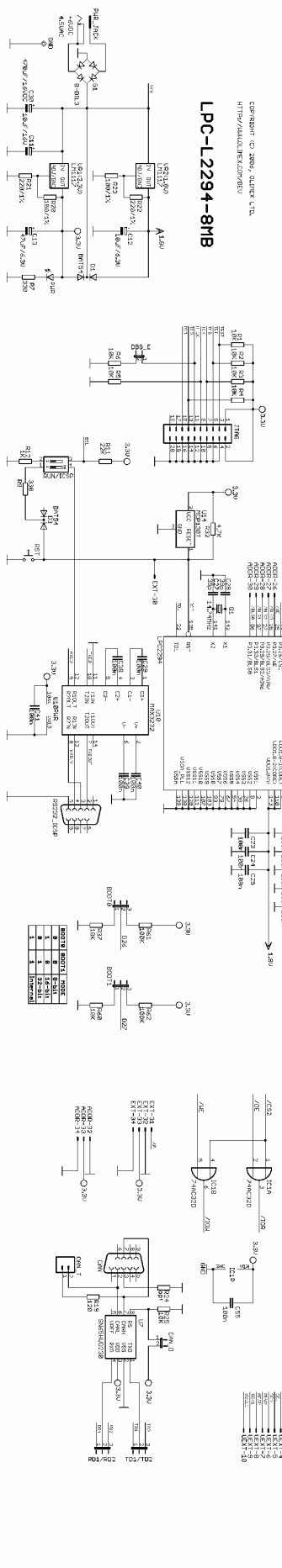
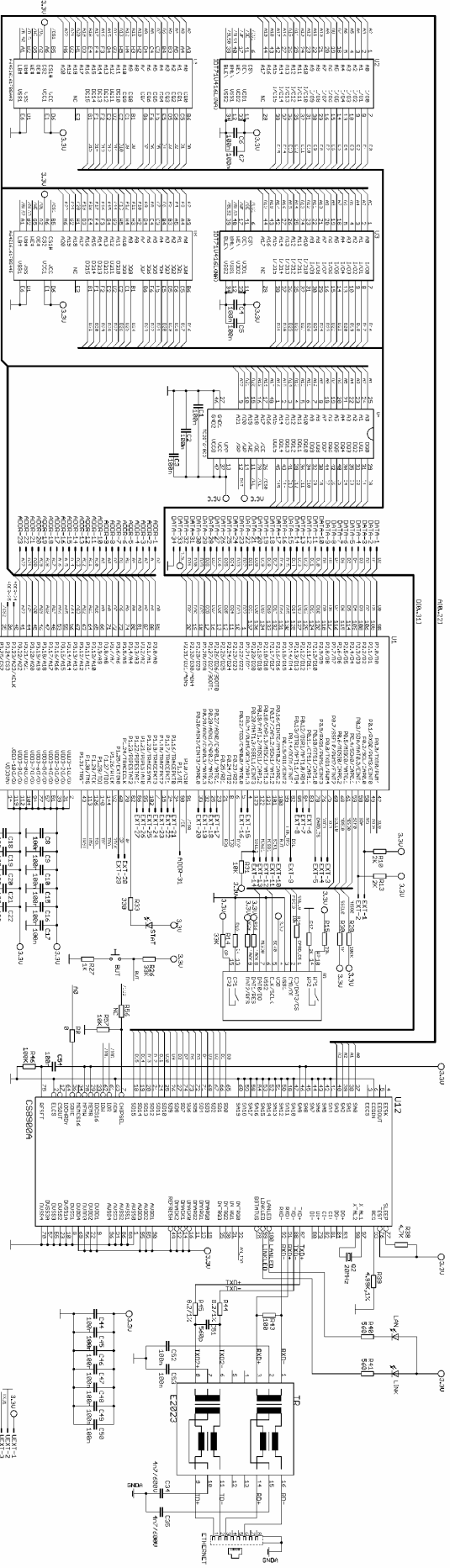
Board dimensions and fix holes:





©2006 SILICON LABS LTD.
 HTTP://WWW.SILICONLABS.COM/DEV
LPC-L2294-1MB

BOOT0	BOOT1	MODE
0	0	0
0	0	1
0	1	0
1	1	0
1	1	1



GERBER FILE C:2865_041REV 1.0
 HTTP://ALU.MURKOV.COM/PCB/

LPC-L2294-8MB

3.3V
 1.8V
 GND
 DATA BUS