

Signing a PCI or USB driver for Windows 8

1/Creating the certificate (make 1 for all driver signing)

open a msdos shell including ddk tools (provided with windows DDK or VS2012). Open it as "Administrator".

```
makecert -r -n "CN=MyCompany - for test use only" -ss  
MyCompanyCertStore -sr LocalMachine
```

2/Packaging the driver into a cat file

```
cd driver_directory  
inf2cat /driver:. /os:7_x86
```

Note : the inf file must have a line **CatalogFile=sample.cat** in the [version] section of the file.

example:

[Version]

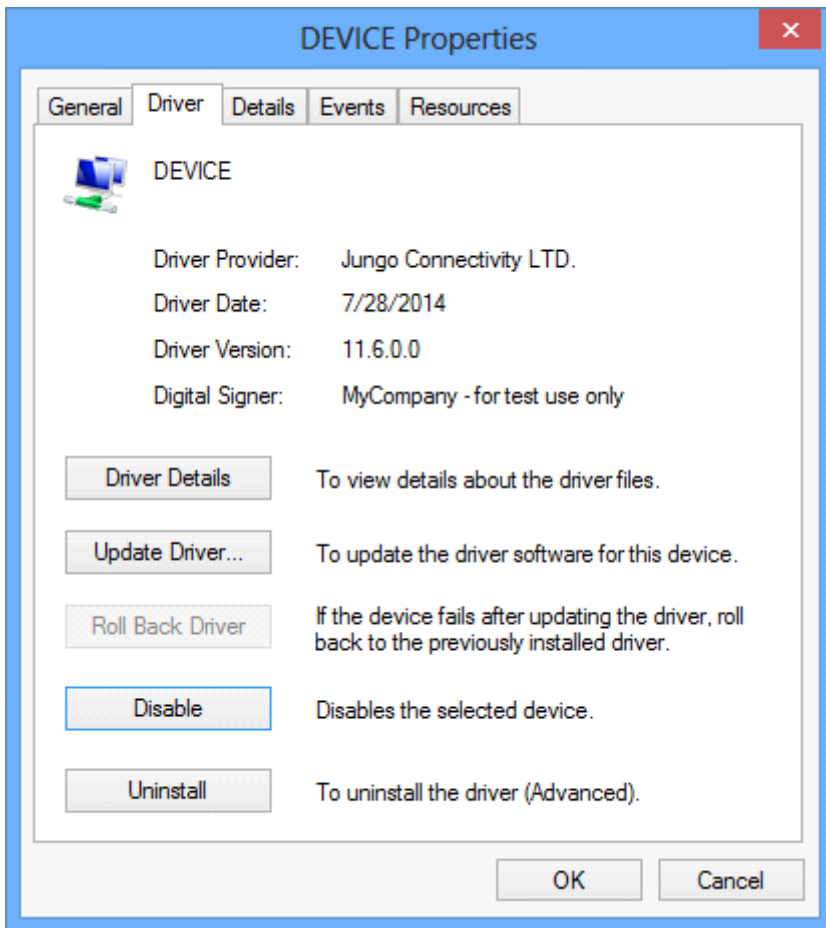
Signature="\$CHICAGO\$" ; Represents all Windows OS's
Provider=%jun%
CatalogFile=sample.cat

3/Signing the driver

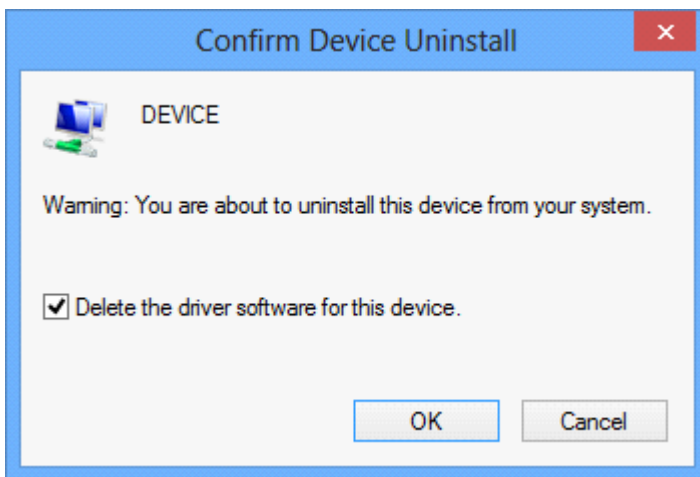
SignTool sign /s MyCompanyCertStore /a /t
<http://timestamp.verisign.com/scripts/timestamp.dll> sample.cat

Annexe : How to update the driver after installation

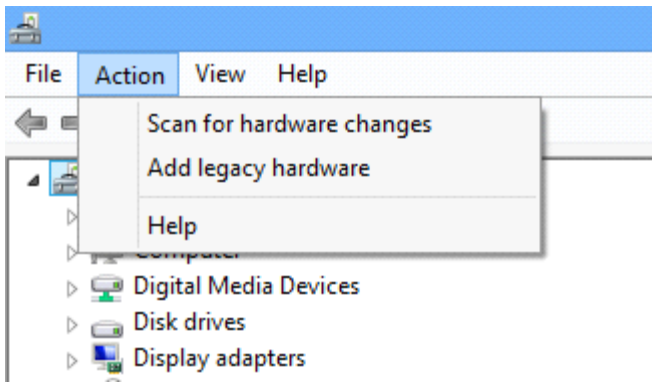
In "device Manager" open the device properties



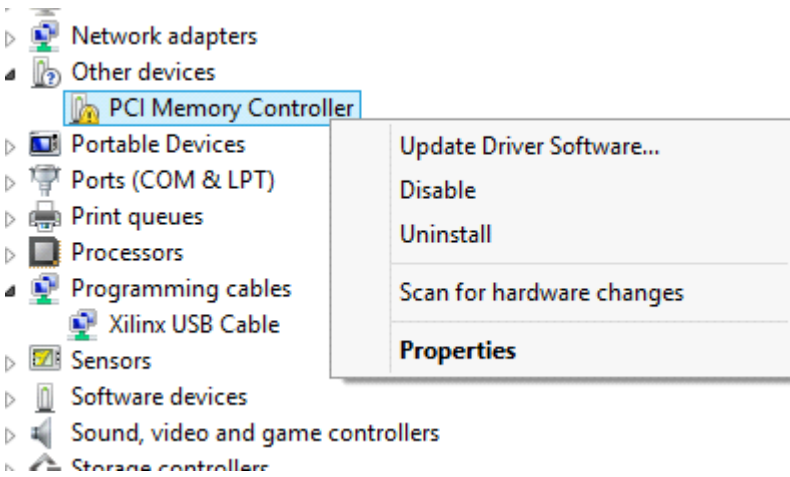
Disable the device, then uninstall the driver



Then , "Scan for hardware changes"



Then "Update driver"



Choose "Browse for installation directory"

