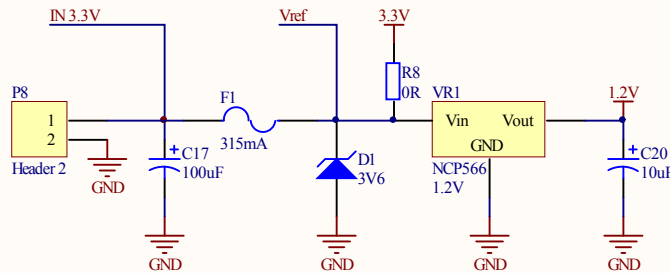
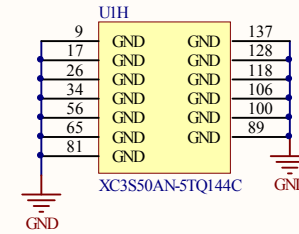
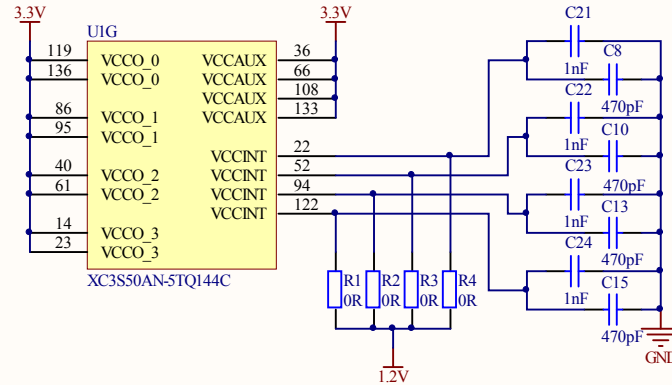
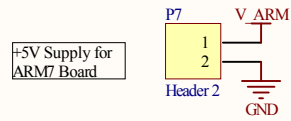
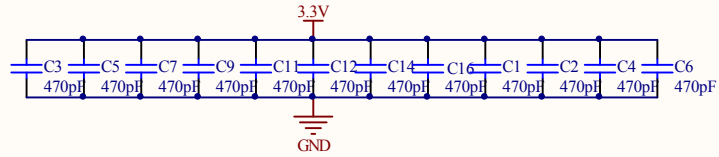
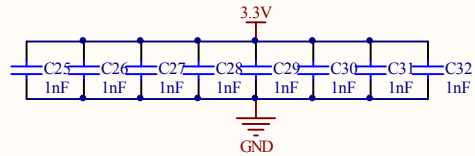
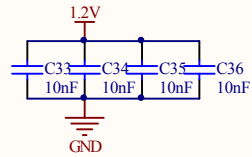
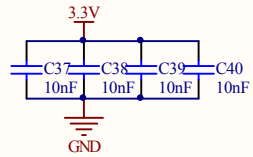
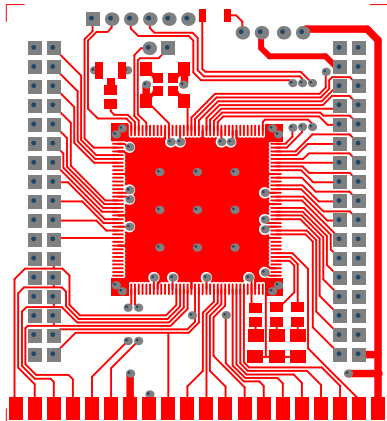
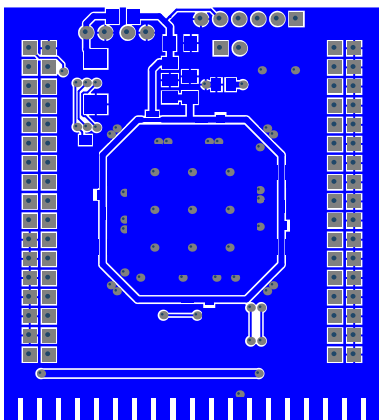


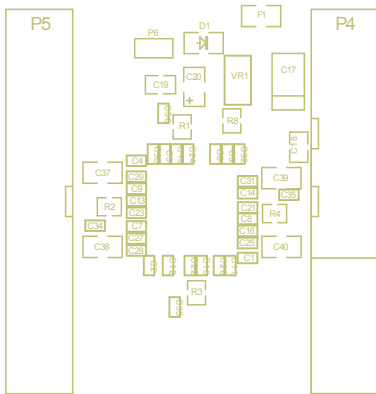
Title		
IO connections		
Size	Number	Revision
A4		
Date:	18-09-2008	Sheet of
File:	C:\Documents and Settings\...IO connections	Drawn By: Caalb



Title		
Power		
Size	Number	Revision
A4		
Date:	18-09-2008	Sheet of
File:	C:\Documents and Settings\...\Power.SchDoc	Drawn By: Caalb







P2

Value	Designator	Footprint	Quantity	Description
100nF	C18, C19	0805	2	!Capacitor
10nF	C33, C34, C35, C36	0603	4	!Capacitor
10nF	C37, C38, C39, C40	1206	4	!Capacitor
1nF	C21, C22, C23, C24, C25, C26, C27, C28, C29, C30, C31, C32	0603	12	!Capacitor
470pF	C1, C2, C3, C4, C5, C6, C7, C8, C9, C10, C11, C12, C13, C14, C15, C16	0603	16	!Capacitor
100uF	C17	Tantal 100uF 10V (lager)	1	!Polarized Capacitor (Radial)
10uF	C20	1206Pol	1	!Polarized Capacitor (Radial)
0R	R1, R2, R3, R4, R8	J0805	5	!Resistor
1K	R9	0805	1	!Resistor
330	R5, R6, R7	0805	3	!Resistor
50Mhz	X1	CB3LV-3C/CFPS-39	1	3.3V, ultra minature surface mo oscillator
	F1	1206	1	Fuse
	P6	HDR1X2	1	Header, 2-Pin
	P7, P8	HDR2x1 M LÅS	2	Header, 2-Pin M LÅS
	P3	HDR1X6	1	Header, 6-Pin
	P4	HDR2X10/17FLAD Combi	1	Header, 17-Pin, Dual row
	P5	HDR2X17FLAD Special	1	Header, 17-Pin, Dual row
	P1	HDR1X20 Kant Special	1	Header, 20-Pin
	P2	HDR1X20 Kant	1	Header, 20-Pin
	D2	LED1206	1	LED
	D3	LED1206	1	LED
	D4	LED1206	1	LED
	P9	Miniature Coaxial Connectors	1	Miniature Coaxial Connectors
	U1	TQ144_L	1	Spartan-3AN Non-Volatile FPGA 108 User I/Os, 144-Pin TQFP, High Performance, Commercial Grade
	S1	B3U-3000P	1	Switch
1.2V	VR1	SOT-223	1	Volt Reg NCP566
3.5V	D1	d1206	1	Zener Diode