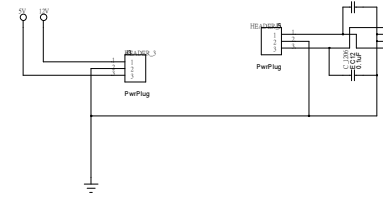
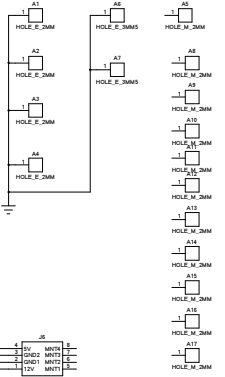
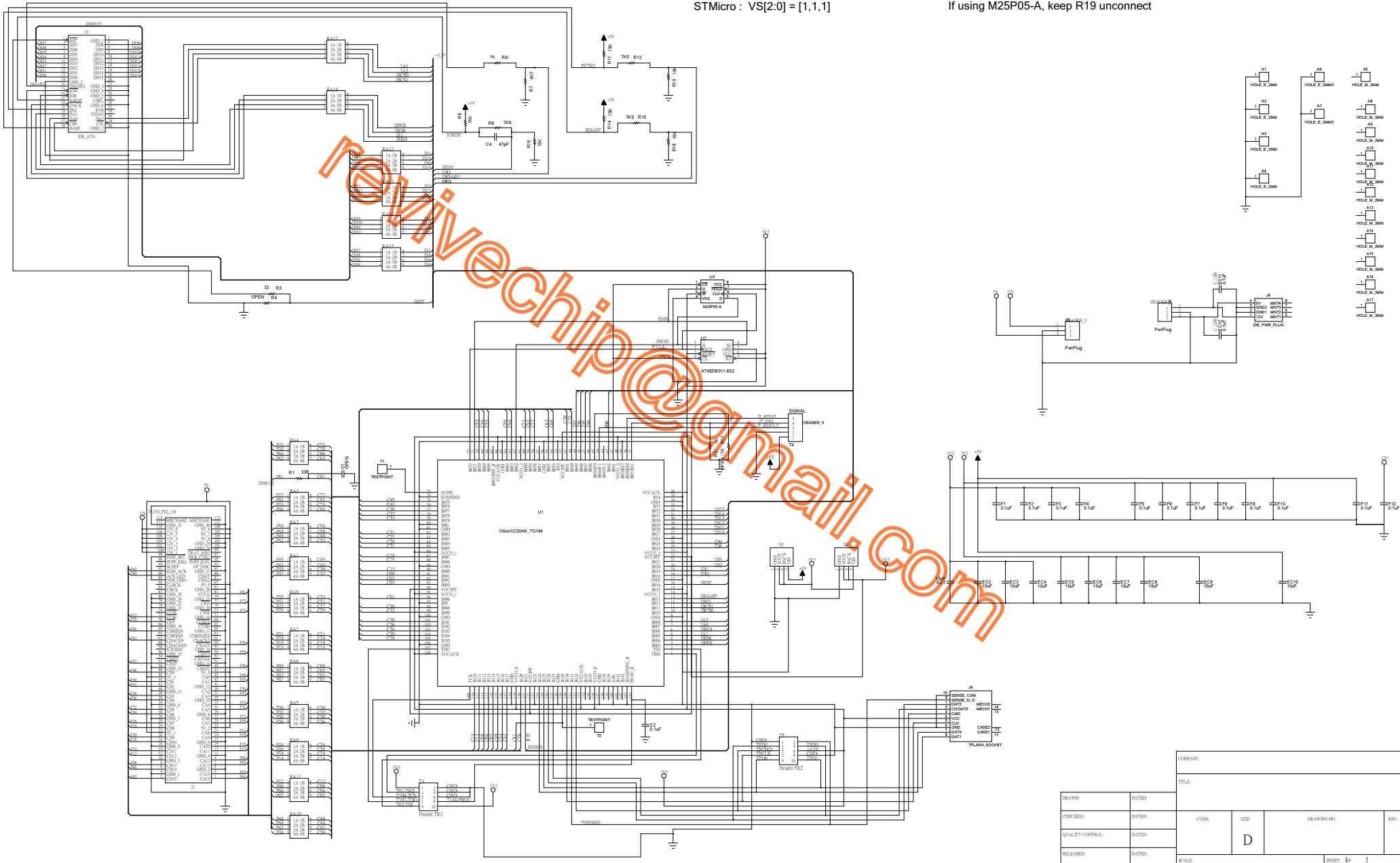


3S50 AN M[2:0] = [0,1,1] ; VS[2:0] = [1,1,1]
 3S50A M[2:0] = [0,0,1]; VS[2:0] = [1,1,1/0];
 AT45DBXXD VS[2:0] = [1,1,1]
 AT45DBXXB VS[2:0] = [1,1,0]
 STMicro : VS[2:0] = [1,1,1]

If using 50AN, keep R2,R19 unconnect
 If using 50A, connect R2 [1K]
 If using 45DBxxD, keep R19 unconnect
 If using 45DBXXB connect R19 [1K]
 If using M25P05-A, keep R19 unconnect

REVISION RECORD			
LTG	REV NO.	APPROVED	DATE



DRAWN:		DATED:		COMPANY:	
CHECKED:		DATED:		TITLE:	
QUALITY CONTROL:		DATED:		CODE:	SIZE:
RELEASED:		DATED:		DRAWING NO.:	REV:
				D	
				SCALE:	SHEET: 1F 1